

★ FOR PHYSICIANS & MEDICAL AESTHETIC PRACTITIONERS

ASAHRS Non-Invasive Hair & Skin Bio-Restoration Fellowship™

A Next-Generation Aesthetic Fellowship for Medical Professionals

A science-driven, non-surgical Hair & Skin Bio-Restoration program integrating cutting-edge technologies, DNA-based personalization, and business frameworks. Launch a high-demand, cash-based service line in 30–90 days.

✓ Ultrasonic & Pneumatic Delivery Systems

✓ Cold Plasma Bio-Rejuvenation Technology

✓ LED Photobiomodulation Therapy

✓ DNA-Based Treatment Personalization

✓ Business Implementation

✓ Complete SOPs & Clinical Protocols

GET MORE INFO

Learn More

PROGRAM OVERVIEW

Advanced Treatment Modalities You Will Learn



Ultrasonic & Pneumatic Delivery Systems

Advanced transdermal infusion for peptides, exosomes & bioactives with precise dosing and coverage for scalp and skin applications.



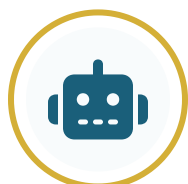
Cold Plasma & LED Therapy

Bio-rejuvenation and photobiomodulation to support collagen, reduce inflammation, and optimize scalp/skin micro-environment.



DNA-Based Treatment Personalization

Genetic analysis to build personalized protocols aligned to DHT sensitivity, follicular cycling, collagen integrity & oxidative stress.



AI-Assisted Consultation Tools

Digital analysis, treatment planning & progress tracking that improve case acceptance and long-term patient engagement.



Complete Business Frameworks

Patient acquisition systems, pricing models, SOPs & service delivery workflows for efficient implementation and scale.



Advanced Marketing Protocols

Ethical digital strategies, social media, SEO/SEM, funnels & retention programs to drive consistent demand and loyalty.

CLINICAL OUTCOMES

What You Will Learn — Part 1

01

Advanced Technology Mastery

- ✓ Hands-on training with ultrasonic delivery
- ✓ Cold plasma bio-rejuvenation protocols
- ✓ LED photobiomodulation therapy
- ✓ Device setup and safety parameters
- ✓ Handpiece control, pass patterns, and surface mapping
- ✓ Layering modalities for outcome-driven workflows

02

Genetic Integration

- ✓ Interpret DNA reports for hair & skin
- ✓ DHT sensitivity and follicular analysis
- ✓ Collagen breakdown markers
- ✓ Build personalized restoration plans
- ✓ Prioritize key SNPs and clinical relevance
- ✓ Translate reports into protocol intensity & frequency

03

Bioactive Protocols

- ✓ Peptide infusion techniques
- ✓ Exosome delivery methods
- ✓ Growth factor applications
- ✓ Treatment frequency and stacking
- ✓ Sterile prep, order of application, and contact time
- ✓ Adjunct scalp/skin conditioning for durability

ADVANCED SKILLS

What You Will Learn — Part 2

04

Business Implementation

- ✓ Patient acquisition strategies
- ✓ Pricing and membership models
- ✓ Treatment packaging systems
- ✓ 30–60–90 day rollout roadmap
- ✓ KPI dashboards and ROI tracking
- ✓ Team training and role clarity
- ✓ Consultation scripts, offers, and retention engines

05

Clinical Protocols

- ✓ Evidence-based treatment algorithms
- ✓ Hair loss protocol development
- ✓ Skin aging restoration plans
- ✓ Structured follow-up systems
- ✓ Severity-tiered pathways (mild–advanced)
- ✓ Contraindications and escalation rules
- ✓ Sequencing and combination strategies

06

Practice Integration

- ✓ Business implementation systems
- ✓ Staff delegation and SOPs
- ✓ Consent and intake templates
- ✓ Marketing and retention scripts
- ✓ RN/NP/aesthetician delegation maps
- ✓ Photography and documentation workflows
- ✓ Quality assurance and compliance checks

What You Will Learn to Treat — Condition-Based Training Pathways

Master each indication and the exact modality used to treat it.

Condition You Will Treat	Modality Used
Skin Conditions	
Fine lines & early wrinkles	LED Photobiomodulation + Ultrasonic Peptide/Exosome Infusion
Loss of glow / dull complexion	LED + Ultrasonic Infusion (brightening actives)
Texture issues & enlarged pores	Cold Plasma + Peptide/Exosome Infusion
Photoaging / Pigment irregularities	DNA-guided actives + Ultrasonic delivery + LED
Redness, inflammation, sensitive skin	Cold Plasma + LED
Post-inflammatory erythema (PIE)	Cold Plasma + LED
Post-inflammatory hyperpigmentation (PIH)	LED + Ultrasonic brightening actives

Continued on next slide →

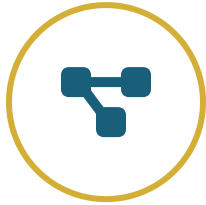
What You Will Learn to Treat — Condition-Based Training Pathways

Master each indication and the exact modality used to treat it.

Condition You Will Treat	Modality Used
Skin Conditions (continued)	
Inflammatory acne & acne-prone skin	Cold Plasma + LED
Barrier dysfunction / dehydrated skin	Cold Plasma + Ultrasonic hydrating actives
Mild acne scarring	Peptide/Exosome Infusion + LED
Hair Conditions	
Hair density loss / miniaturization	Ultrasonic GF/Peptide Delivery + LED
Scalp inflammation / irritation	Cold Plasma + LED
Scalp microbiome imbalance	Cold Plasma
DNA Personalization	
DNA-based risk pathways (aging, pigment, collagen, hair thinning)	DNA Personalization Engine

DAY 1 — MORNING

Clinical Foundations & Core Technology Mastery



Program Overview & Bio-Restoration Framework

- ✓ Position as a high-demand, cash-based service line within an aesthetic/regenerative practice.
- ✓ End-to-end architecture: consult → protocol selection → progression mapping → follow-up.
- ✓ SOPs, consent, documentation standards, photography, and QA checkpoints.
- ✓ Team roles and handoffs for consistent patient experience.



Hair & Skin Aging: Clinical Fundamentals

- ✓ Hair: DHT sensitivity, follicular miniaturization, scalp microbiome, inflammation, and perfusion.
- ✓ Skin: collagen/elastin degradation, texture/pores, pigment irregularity, barrier dysfunction.
- ✓ Link clinical findings to non-invasive therapies and measurable baseline metrics.
- ✓ Define realistic timelines and response windows for patients.



Indications & Patient Selection

- ✓ Stratify focus areas: hair density, scalp health, skin glow/texture, DNA-informed longevity.
- ✓ Contraindications, expectation setting, staged goals, and informed consent.
- ✓ Match severity to session frequency, duration, and home-care support.
- ✓ Define success metrics and photo documentation cadence.



Technology Stack Introduction

- ✓ Ultrasonic & pneumatic delivery: indications, safety parameters, device setup & hygiene.
- ✓ Cold plasma bio-stimulation and LED photobiomodulation: mechanisms and use-cases.
- ✓ Layering/sequencing modalities for predictable, synergistic outcomes.
- ✓ Pre/post-care standards and contra-actions to monitor.

DAY 1 — AFTERNOON

Hands-On & Protocol Design



Ultrasonic & Pneumatic Transdermal Delivery

- ✓ Safe parameters: frequency, pressure, flow, and pass counts by indication.
- ✓ Applications: peptides, exosomes, growth factors, and other bioactives.
- ✓ Dosing patterns, overlap strategy, and endpoint assessment for consistency.
- ✓ Safety: avoidance zones, hygiene, and patient comfort techniques.



Cold Plasma & LED Photobiomodulation

- ✓ Mechanisms: ionized gas effects, mitochondrial stimulation, ATP up-regulation.
- ✓ Indications: collagen stimulation, inflammation modulation, barrier support.
- ✓ Protocol layering: timing and sequencing with delivery systems for synergy.
- ✓ Dosimetry: wavelength, fluence, duty cycle, and exposure consistency.



Bioactive Infusion Protocols

- ✓ Regimen design: peptide-based, exosome-enhanced, and growth factor programs.
- ✓ Stacking & frequency: session intervals, cycles, and maintenance planning.
- ✓ Pre/post-care: priming, barrier management, and at-home adjuncts.



Hands-On Technology Rotations

- ✓ Device setup & verification: calibration, safety checks, and hygiene.
- ✓ Technique drills: handpiece control, surface mapping, and pass methods.
- ✓ Station workflow: documentation, photography, and outcome tracking.

DAY 2 — MORNING

DNA Personalization, AI Tools & Clinical Algorithms



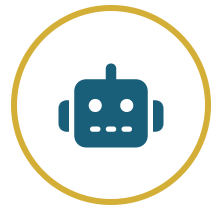
DNA-Based Treatment Personalization

- ✓ Identify key markers: AR/5-alpha reductase, follicular cycling, oxidative stress.
- ✓ Interpret collagen/elastin integrity and pigmentation/photoaging SNPs.
- ✓ Translate findings into risk tiers and targeted bio-restoration goals.
- ✓ Build individualized action plans and communicate risk/benefit clearly.



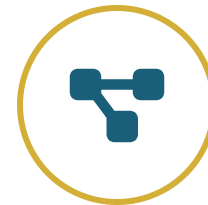
Genomic Integration into Protocols

- ✓ Adjust treatment intensity and frequency based on predisposition.
- ✓ Select actives: peptides, exosomes, growth factors aligned to DNA profile.
- ✓ Define maintenance windows and re-testing cadence.
- ✓ Document protocol rationale and expected response milestones.



AI-Assisted Consultation & Follow-Up

- ✓ Capture baselines with standardized photos and trichoscopy.
- ✓ Use protocol selection engines and progression mapping tools.
- ✓ Track outcomes and adherence dashboards to boost retention.
- ✓ Leverage visuals/simulations to improve case acceptance.



Evidence-Based Clinical Algorithms

- ✓ Standardized pathways for hair loss: mild, moderate, advanced.
- ✓ Skin aging protocols by severity and phenotype.
- ✓ Combined hair + skin plans with clear progression checkpoints.
- ✓ Define follow-up cadence and objective measures to assess response.

DAY 2 — AFTERNOON

Business Implementation & Practice Integration



Building High-Demand Cash-Based Program Suite

- ✓ Program naming & positioning for high perceived value
- ✓ Hair Density, Skin Bio-Rejuvenation & DNA-informed pathways
- ✓ Clear outcomes, milestones & before/after pathways
- ✓ Membership structure for predictable recurring revenue



Business & Marketing Frameworks

- ✓ Instagram/TikTok & Google growth strategies
- ✓ Lead funnels, nurture journeys & retention plans
- ✓ Content pillars, assets & compliant messaging
- ✓ Analytics dashboards with KPI tracking



Pricing, Memberships & Offers

- ✓ Tiered programs (entry, core, premium)
- ✓ Consultation scripts & pricing psychology
- ✓ Upsell & cross-sell flows
- ✓ Ethical financing & pay-later options



Practice Integration & Delegation

- ✓ SOPs & checklists for hair & skin protocols
- ✓ Delegation maps for RN/NP/aestheticians
- ✓ Intake, consent, photography & documentation
- ✓ Training cadence & QA for reproducibility



Final Q&A & Strategic Planning

- ✓ Map 30–60–90 day implementation to your practice
- ✓ Resource, staffing & technology planning
- ✓ Risk, compliance & success metrics alignment
- ✓ Personalized launch checklist & timeline

THE ASAHRS DIFFERENCE

Why This Fellowship? (Part 1) — High-value programs and comprehensive technology training for modern practices.



High-Demand, Cash-Based Service Line

Convert common hair & skin concerns into structured, high-value programs that patients understand and commit to.

- ✓ Hair Density Programs aligned to measurable milestones
- ✓ Skin Bio-Rejuvenation Programs focused on glow & texture
- ✓ DNA-informed prevention & longevity pathways
- ✓ No insurance billing — clear value, transparent pricing
- ✓ Recurring monthly revenue via memberships & packages
- ✓ High patient acceptance and retention with visible progress
- ✓ Premium positioning with defined outcomes & timelines



Comprehensive Technology Training

Hands-on device mastery with standardized safety, setup, and protocol layering for reproducible results.

- ✓ Ultrasonic & pneumatic transdermal delivery systems
- ✓ Cold plasma bio-stimulation for scalp & skin rejuvenation
- ✓ LED photobiomodulation protocols for recovery & collagen
- ✓ Peptide & growth-serum infusion techniques
- ✓ Safety parameters, device setup SOPs, delegation maps
- ✓ Competency checkpoints & certification upon completion
- ✓ Protocol layering to maximize outcomes with low downtime

Advanced Training & Growth

Part 2 — Personalization, Competency, and Practice Expansion



DNA-Based Personalization

Genetic data based protocol design for precise, individualized hair & skin bio-restoration plans.

- ★ Order and interpret targeted SNP panels with clinical utility
- ★ Map DHT sensitivity, miniaturization risk, and follicular cycling
- ★ Select actives by genetic data (peptides, exosomes, growth factors)
- ★ Adjust intensity/frequency; build phase-based maintenance
- ★ Educate patients with clear, consent-aligned narratives



Competency-Driven Curriculum

An outcomes-based framework that links theory to hands-on execution with measurable mastery.

- ✓ Guided device labs and structured skills rotations
- ✓ Standardized SOPs, protocols, and checklists
- ✓ Competency assessments and curated case logs
- ✓ Safety culture and complication-prevention drills
- ✓ Clear milestones with feedback and advancement



Practice Integration & Growth

Implementation systems to launch, scale, and sustain a premium, non-invasive bio-restoration service line.

- ✓ Service-line design and scalable clinic workflows
- ✓ ROI modeling, pricing architecture, and packaging
- ✓ Delegation maps for RN/NP/aestheticians
- ✓ Memberships for predictable recurring revenue
- ✓ Physician-appropriate marketing and retention funnels

INVESTMENT

COURSE FEES

Complete Fellowship Training

STANDARD ENROLLMENT

\$4,950

Comprehensive fellowship program

- ✓ Technology modules
- ✓ Clinical protocols & SOPs
- ✓ Business implementation guide
- ✓ Clinical case studies
- ✓ Protocols for hair + skin
- ✓ Fellowship Certification
- ✓ Hands-on device training
- ✓ Marketing templates



Flexible Financing Available

Affirm


Klarna

PayPal Pay Later

UPCOMING TRAINING

Dates & Pricing

Choose your preferred training location. Tuition and seat availability shown below.




Beverly Hills, CA


Jan 21-22, 2026

8920 Wilshire Blvd Suite 604, Beverly Hills, CA 90211

\$4,950 Tuition

SOLD OUT

 Sold Out



Miami, FL


Feb 18-19, 2026

Hotel Pullman, Miami Airport, Miami, FL 33126

\$4,950 Tuition

REGISTRATIONS OPEN

Register Now




Las Vegas, NV

To be announced

3195 St Rose Pkwy, Henderson, NV 89052

\$4,950 Tuition

REGISTRATION NOT OPEN

 Not Open

Flexible financing available

Affirm

Klarna

PayPal Pay Later

READY TO ADVANCE YOUR PRACTICE?

2-day intensive fellowship for physicians and medical aesthetic practitioners. Master non-invasive clinical protocols, DNA-based personalization, device workflows, and business systems to launch a high-demand, cash-based service line in 30–90 days.

♦ **\$4,950 Tuition**

- ✓ Ultrasonic & pneumatic transdermal delivery
- ✓ Cold plasma & LED photobiomodulation therapy
- ✓ DNA interpretation & personalized protocols
- ✓ Bioactive infusion: peptides, exosomes, growth factors
- ✓ Complete SOPs, consent, intake & algorithms
- ✓ Pricing, packaging, memberships & marketing
- ✓ 30–60–90 day implementation roadmap

 **Request Info**

 **View Dates**

GET COMPLETE INFO PACKAGE

Contact

 **321-204-7431**

 **contact@asahrs.com**

 **www.asahrs.com**

Flexible financing available

Affirm

Klarna

PayPal Pay Later

★ FOR PHYSICIANS, NURSES & MEDICAL AESTHETIC PRACTITIONERS

ASAHRS Hair Transplant Fellowship Program™

A Structured, Academically Grounded Fellowship for Modern Hair Restoration

Designed for physicians and nurses seeking competency in modern hair restoration — including FUE harvesting, implantation, hairline design, non-surgical bio-restoration, and DNA-based personalization.

✓ Manual, Motorized, Automated & Robotic FUE

✓ Non-Surgical Bio-Restoration

✓ DNA-Based Treatment Personalization

✓ AI-Assisted Consultation Tools

✓ Complete Business Frameworks

✓ Advanced Marketing Protocols

GET MORE INFO

Learn More